



GAT MONTHLY MEMBERSHIP PROGRESS REPORT

Results as of: 5/31/2022

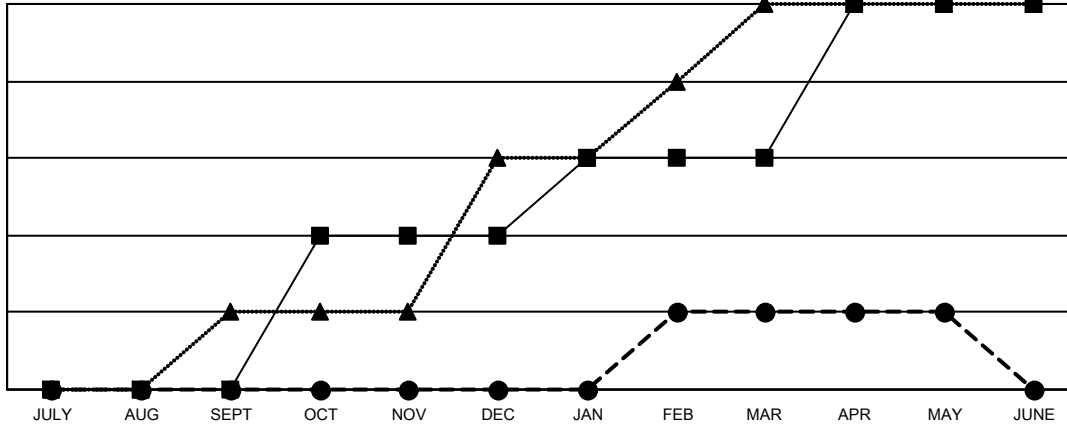
Multiple District 21

LOCATION: ARIZONA

Clubs			
RESULTS FOR 2021-2022			
QUARTER	NEW CLUB GOAL	NEW CLUBS	DROPPED CLUBS
JULY/AUG/SEPT	0	0	1
OCT/NOV/DEC	2	0	2
JAN/FEB/MAR	1	1	1
APR/MAY/JUNE	2	0	0

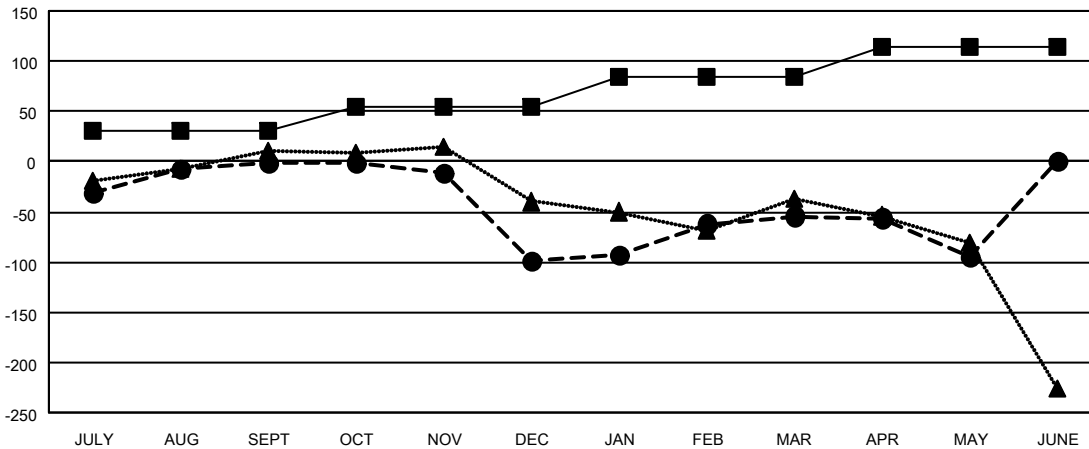
Members			
RESULTS FOR 2021-2022			
QUARTER	MEMBER GROWTH NET GOAL	MEMBER GROWTH ACTUAL	DROPPED MEMBERS ACTUAL (including transfers)
JULY/AUG/SEPT	30	118	90
OCT/NOV/DEC	25	94	165
JAN/FEB/MAR	30	106	48
APR/MAY/JUNE	30	44	78

GOALS AND ACTUAL NEW CLUBS CUMULATIVE



- CURRENT YEAR GOALS FOR NEW CLUBS
- CURRENT YEAR ACTUAL NEW CLUBS
- ▲- LAST YEAR ACTUAL NEW CLUBS

GOALS AND ACTUAL MEMBERS CUMULATIVE



- MEMBER GROWTH NET GOAL
- MEMBER GROWTH ACTUAL
- ▲- LAST YEAR MEMBERSHIP ACTUAL

DROPPED CLUBS: 4	64 CLUBS OF 109 ADDED 1 OR MORE NEW MEMBERS	GENDER DISTRIBUTION
DROPPED MEMBERS	CLICK HERE FOR CUMULATIVE MEMBERSHIP DATA	MALE 1,343 (52.63%)
DECEASED 49		FEMALE 1,209 (47.37%)
CLUB CANCELLED 18		NON BINARY 0 (0.00%)
OTHER 315		PREFER NOT TO ANSWER 0 (0.00%)
TOTAL 382		TOTAL FAMILY UNIT MEMBERS 632
		FAMILY MEMBERS PAYING HALF DUES 337